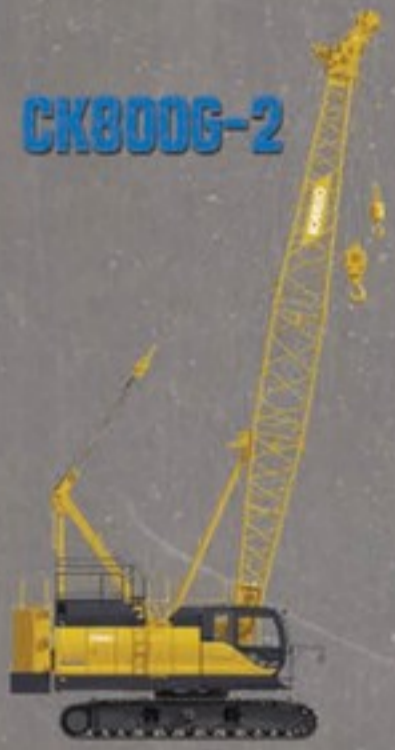


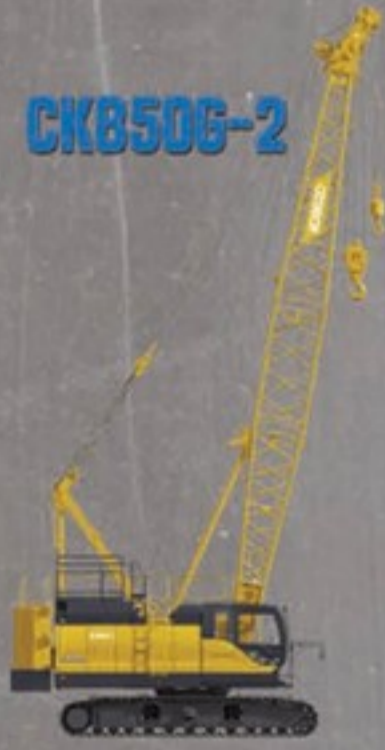
KOBELCO

WWW.KCMU-CRANES.COM

CK800G-2



CK850G-2



CK1100G-2



CK1200G-2



CK1600G-2



CK2750G-2



MEET OUR NEW BIG BROTHER

CK3300G-2



Kobelco's Largest Lattice-Boom Crawler Crane Comes to America

Kobelco Construction Machinery USA has rolled out the first unit of the new CK3300G-2, a lattice-boom crawler crane that offers 330-ton capacity as a standard lift crane and can be equipped with fixed jib, heavy fixed jib, or luffing jib, as well as heavy-lift or super-heavy-lift attachments.

Jack Fendrick, vice president of the crane division of Kobelco Construction Machinery, USA, said that the CK3300G-2 offers exceptional versatility, excellent lifting capacity, a comfortable operator's cabin, Kobelco's typical built-in reliability, and easy transportation and assembly.

Both rugged and versatile, the CK3300G-2 is well suited to work in a full range of applications across a wide variety of industries from pile driving to steel erection, tilt-wall work, equipment placement, and heavy lifting.

Fendrick expects the CK3300G-2 to become North America's new standard in the 300-ton class of lattice-boom crawler cranes. He said Kobelco did its research before designing the new machine, so it offers the features that customers want most and delivers capacities that compete with or are higher than those of its competitors.

Long Reach, High Capacities

The basic crane can lift 330 tons at an 18.1' radius on 78' of boom. Maximum boom length is 295', and maximum capacity on the long boom is 187,300 lbs. at radii from 39.7' to 55'.

The standard fixed jib can lift up to 58,600 lbs. at a 40.7' radius. Its length ranges from 40' to 100'. The maximum combination is 256'+100'.

The heavy fixed jib is made from the butt, top, and one 40' insert of the luffing jib, for a total length of 98'. Its maximum capacity is 88,200 lbs. at a 72.2' radius. The maximum combination is 236'+98'.

The luffing jib can lift up to 260,200



Kobelco's new CK3300G-2

lbs. at a 44' radius. The shortest combination of boom and luffing jib is 98'+78'. The longest combination on the standard crane is 197'+217'.

Kobelco's Super Heavy Lift attachment can be used with the main boom or the luffing jib for excellent capacities on longer boom lengths and longer radii. Kobelco says that the CK3300G-2 equipped with the Super Heavy Lift attachment can compete with cranes in the 400- to 500-ton class.

Cab and Controls

The enclosed cab is the same one used on other Kobelco crawler cranes, so operators will feel comfortable and familiar with it. It is designed for operator comfort, easy operation, and excellent visibility. Extra-wide windows and up to 15.8° of cab tilt offer excellent visibility. The load-moment indicator features a 12" touch screen that is easy to use and delivers all the essential data an operator needs. The

pilot-pressure hydraulic controls are responsive and reliable.

Modular Transportation

All transportation modules are 10' or less in width, and the base machine's main shipping module weighs 116,200

lbs. with the mast on, or just 93,615 lbs. with the mast removed. If the mast needs to be removed to meet shipping weight requirements, its 26-part boom-hoist reeving stays intact to speed up crane assembly. The machine can self assemble, if shipped with the mast in place,

and four hydraulic transliiter jacks for raising the main shipping module off the trailer come standard. To minimize the number of truckloads, jib sections can nest inside boom sections, and the counterweights are designed for shipment with boom sections to optimize trucking efficiency. The entire crane with 295' of boom and full counterweight can ship in 17 truckloads.

Compact Footprint

The CK3300G-2 delivers its high capacity and long reach in a relatively small footprint. The crawlers are 32'10" long and have an overall stance width of 26'7" (equipped with 52" standard crawler pads). The counterweight tailwing measures just 23'11". Clearance from the ground to the bottom of the counterweight is 5'2".

Made for Rough Ground

Designed to handle the rough or sloppy ground often found on construction sites, the CK3300G-2 features wide

A 26'7" wide stance, 52" pads, 21" ground clearance, and Kobelco's Quatro twin-motor crawler drive are built to handle rough terrain.



YOUR SUPPORT NETWORK STARTS HERE.

RENEW

CRANE

HOT LINE

Just enter the link below in your browser, and fill out the information on the form, to receive your **FREE** subscription.

www.cranehotline.com/freesub.html



DON'T DELAY

RENEW YOUR FREE SUBSCRIPTION ONLINE TODAY!

The Leading Source for the Crane, Rigging, and Specialized Transport Industry

PLUS!
Lifting 360°

As an added **BONUS**, you will receive a complimentary subscription to the digital issue and industry news alerts via email.

crawler pads and what Kobelco says is the highest ground clearance in its class. Average ground-bearing pressure with 78' standard boom, 308,700-lb. upperworks counterweight, 88,200-lb. carbody counterweight, and 386-ton load block is about 19.9 psi. Each crawler has a drive motor at each end for smooth, steady, powerful traction. The tracks can counter-rotate to deliver maximum maneuverability. All track rollers are sealed and need no maintenance. Maximum gradeability is 20% (11.3°).

Fast, Powerful Performance

The two standard load-hoist drums are powered hydraulically, both offer 57,035-lb. single-line pull on the first layer, and 33,045 lbs. of rated pull on all layers. Each is grooved for 28 mm rope, offers up to 377 fpm line speed, and can spool up to 1,969' of rope for

storage. Free-fall drums are optional. The swing system uses two hydraulic motors driving pinions that mesh with an internal swing gear on the triple-row swing bearing. Because the bearing has

an internal swing gear, it has a larger overall diameter for more stability. Maximum swing speed is 1.7 rpm.

New Engine

The CK3300G-2 features a new diesel engine from Scania. The six-cylinder DC13 084A complies with EPA Tier 4 Final emission regulations and delivers 450 hp at 2,100 rpm, or 1,663 lb.-ft. of torque at 1,300 rpm. The exhaust after-treatment system uses easy-to-maintain selective catalytic reduction (SCR) which simply requires filling the diesel exhaust fluid (DEF) tank periodically.

KCross

The Kobelco Remote Observation Satellite System, or KCross, is standard on all G-2 Series models. It lets the owner monitor the crane from his or her desktop. ■



The luffing jib delivers competitive capacities and long reach.

Diesel Fuel & DEF Tanks

Diesel/DEF & Lubricant Storage & Dispensing • Waste Oil Storage



Tanks available in
132-21,715 gallons



FuelCube
250-1,000 gallons



TransCube
132-1,198 gallons



Stack it.



Lift it.



Fill it.



888-239-0552
sales@scaleandcontrol.com
SCALEANDCONTROL.COM

DESIGN · ENGINEERING · MANUFACTURING



CUSTOM LIFTING SOLUTIONS | STATE OF THE ART BOOM DOLLIES

6101 DEAN MARTIN DRIVE · LAS VEGAS, NV 89118 · PHONE: (702) 798-8920
TWM-USA.COM · INFO@TWM-USA.COM